

Integrated Sensor Urinal

Product Features

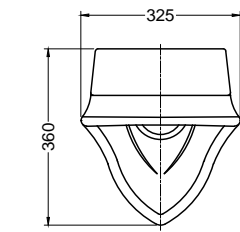
- Integrated sensor activation urinal
- Excellent water efficiency
- Side mechanical over-riding button
- Compact design with removable internal trap for easy cleaning
- Splash reducing feature
- Adjustable height feature for trap outlet installation

Product Specification

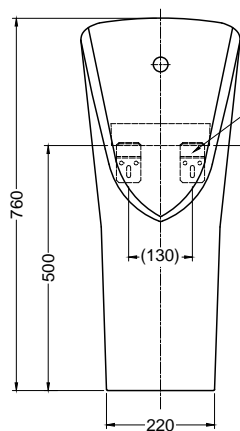
- Installation type : Wall mounted
- Dimension : 360(L) x 325(W) x 760(H)mm
- Material : Vitreous China
- Water inlet : Back
- Discharge volume : Nominal 0.5-1.0 Litres/ flush



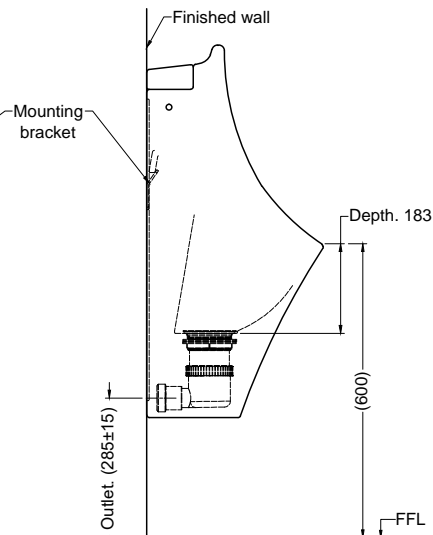
Technical Drawing



Top view



Front view



Side view

() Denotes recommended value.
All dimension are in mm.

Rev	1.0
Date	17.08.2021

DISCLAIMER : While every effort has been made to ensure factual accuracy, the information presented is subject to changes due to requirements in different sites, markets and / or countries. Rigel reserves the right to make the necessary amendments at any time without prior notice.